



PowerPlex[®] 21 System

Faster process. Flexible protocols. Unbeatable Results.

The Power to Solve...*from Sample to Analysis*



Promega

The Power to Solve...from Sample to Analysis

Analyze samples in less time, regardless of sample type.

The PowerPlex® 21 System allows for STR analysis of human forensic samples, common database samples and paternity samples. The system provides:

- Rapid thermal cycling, saving time with every run
- Unbeatable inhibitor tolerance, enabling analysis of challenging casework samples
- Optimized protocols for many sample types, including direct amplification from FTA® cards as well as pretreated non FTA® card punches or swabs

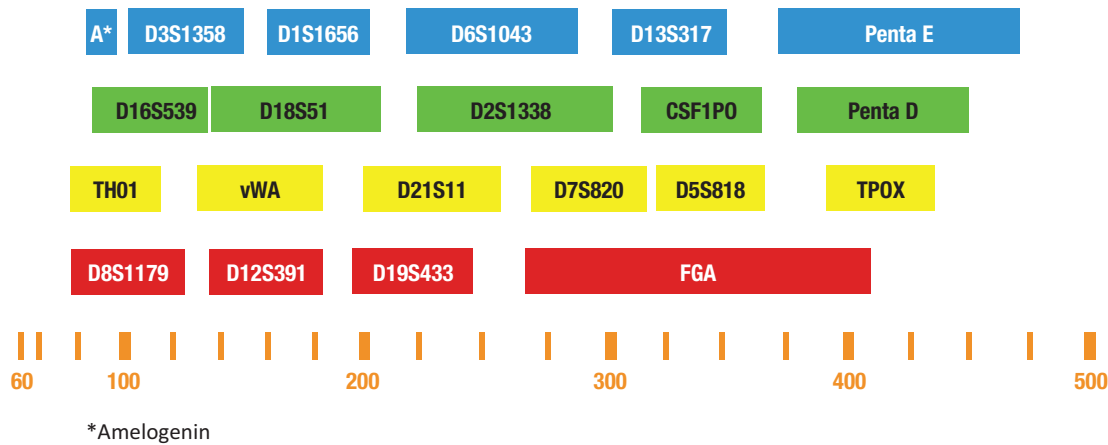


Figure 1. Configuration of the PowerPlex® 21 System. The PowerPlex® 21 System allows amplification of all 13 CODIS loci: D3S1358, D5S818, D7S820, D8S1179, D13S317, D16S539, D18S51, D21S11, CSF1PO, FGA, TH01, TPOX and vWA, plus Amelogenin, Penta D, Penta E, D1S1656, D2S1338, D6S1043, D12S391 and D19S433.

Rapid Thermal Cycling

The PowerPlex® 21 System uses rapid PCR technology to save time with every run. Amplification can be completed in about 90 minutes, enabling improved efficiency and productivity in your laboratory.

Unbeatable Inhibitor Tolerance

The PowerPlex® 21 System is considerably more tolerant of PCR inhibitors than other STR systems, including the PowerPlex® 16 HS System. This means more interpretable data and less need for re-amplification of difficult samples.

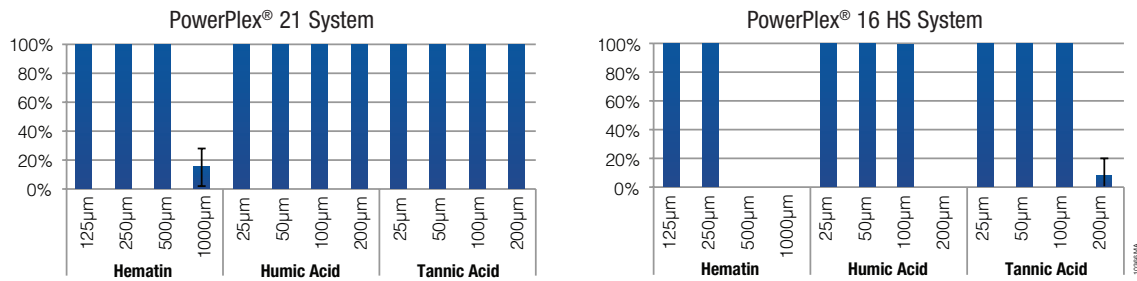


Figure 2. Human genomic DNA (500pg; n = 3) was amplified with the PowerPlex 16 HS and 21 Systems in the presence of common inhibitors such as hematin, humic acid and tannic acid. Percent of alleles called are indicated.

Flexibility for Most Sample Types

The PowerPlex® 21 System handles difficult casework samples and is compatible with direct amplification from FTA® card punches as well as pretreated swabs, Bode Buccal DNA Collector™ punches or S&S 903 punches.

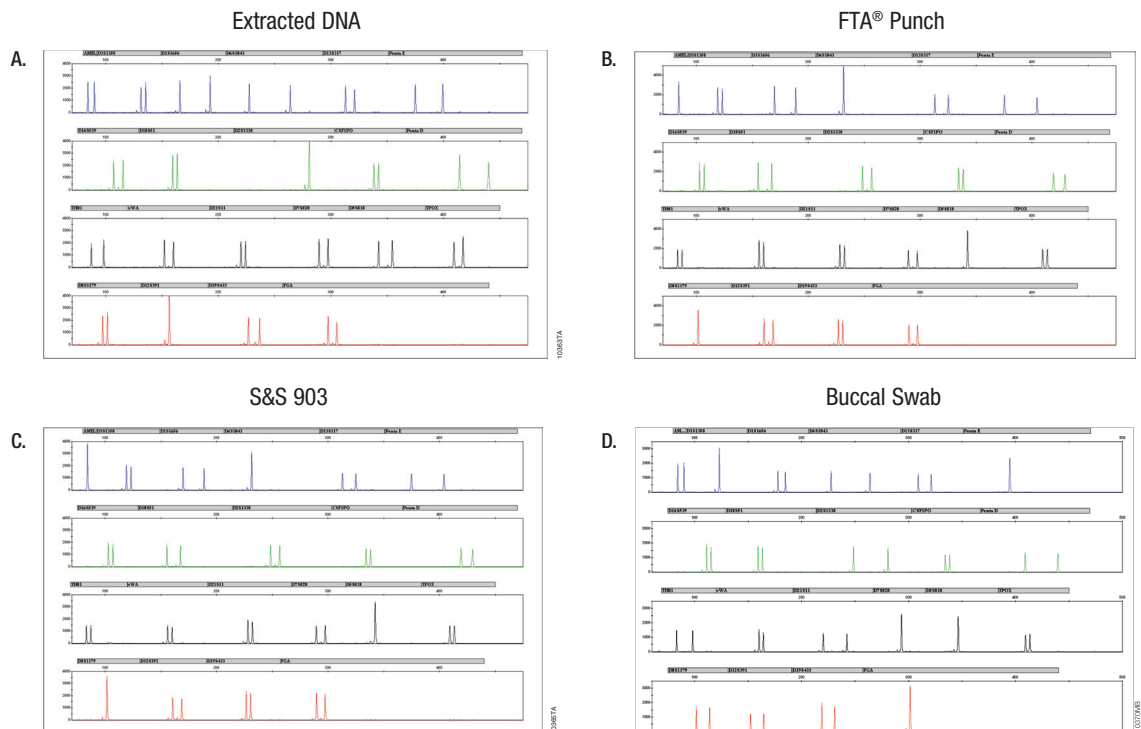


Figure 3. Amplification of samples with the PowerPlex® 21 System. Panel A. 500pg of human genomic DNA; Panel B. 1.2mm punch from blood on a FTA card (direct amplification); Panel C. 1.2mm punch from buccal samples on S&S 903 (pretreated with PunchSolution™ prototype reagent); Panel D. Buccal swab (pretreated with SwabSolution™ prototype reagent). Amplified products were separated on an Applied Biosystems 3130 or 3130xl Genetic Analyzer (3kV, 5-second injection).

Ordering Information


PRODUCT	SIZE	CAT.#
PowerPlex® 21 System	200 reactions	DC8902
PowerPlex® 5-Dye Matrix Standards, 3100/3130	25µl (each dye)	DG4700


For more information, visit:


www.promega.com/powerplex21

The Power to Solve



 **Identity Automation™:** Fully developed and tested high-throughput solutions with Promega installation, training and support

 Automation

 Chemistry

 Software

Products may be covered by pending or issued patents or may have certain limitations. Please visit our Web site for more information. Maxwell, Plexor and PowerPlex are registered trademarks of Promega Corporation. Differex, DNA IQ, Identity Automation, Slicprep and STR Normalization Manager are trademarks of Promega Corporation.